

Major Scale Modes

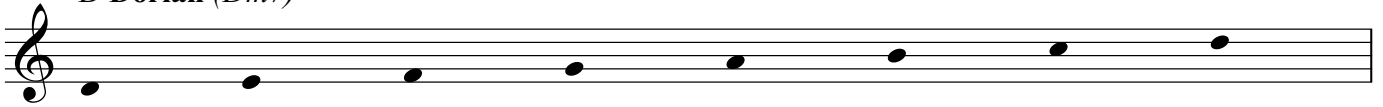
(Shown in chromatic order and in their most common enharmonic voicing)

Jamie Toms

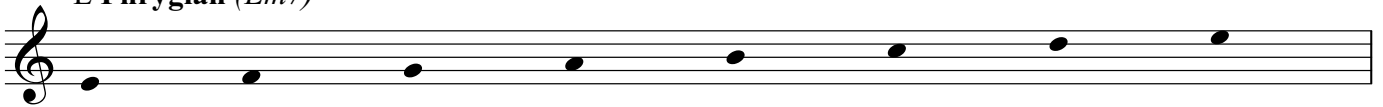
C Ionian (*Cmaj7*)



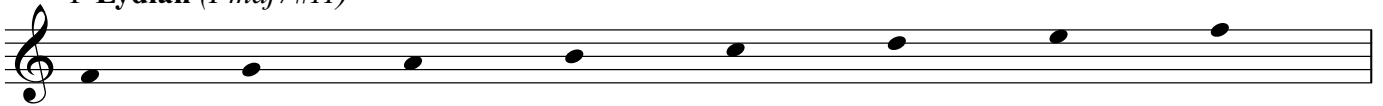
D Dorian (*Dm7*)



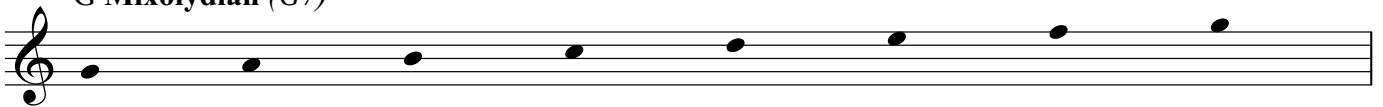
E Phrygian (*Em7*)



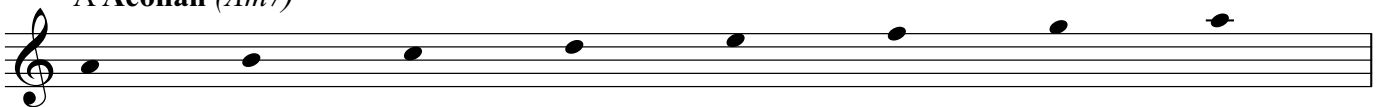
F Lydian (*Fmaj7#11*)



G Mixolydian (*G7*)



A Aeolian (*Am7*)



B Locrian (*Bm7b5*)

